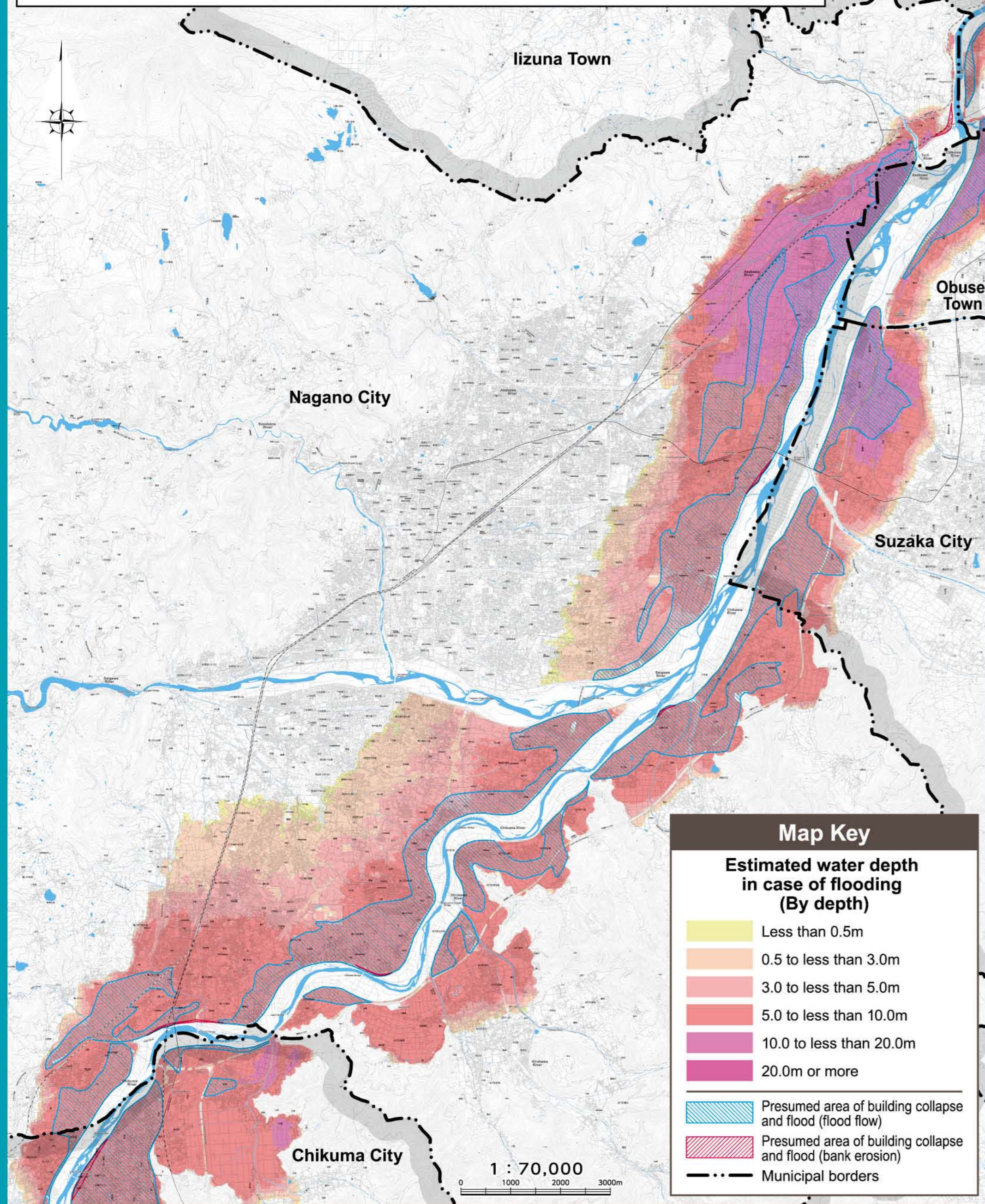


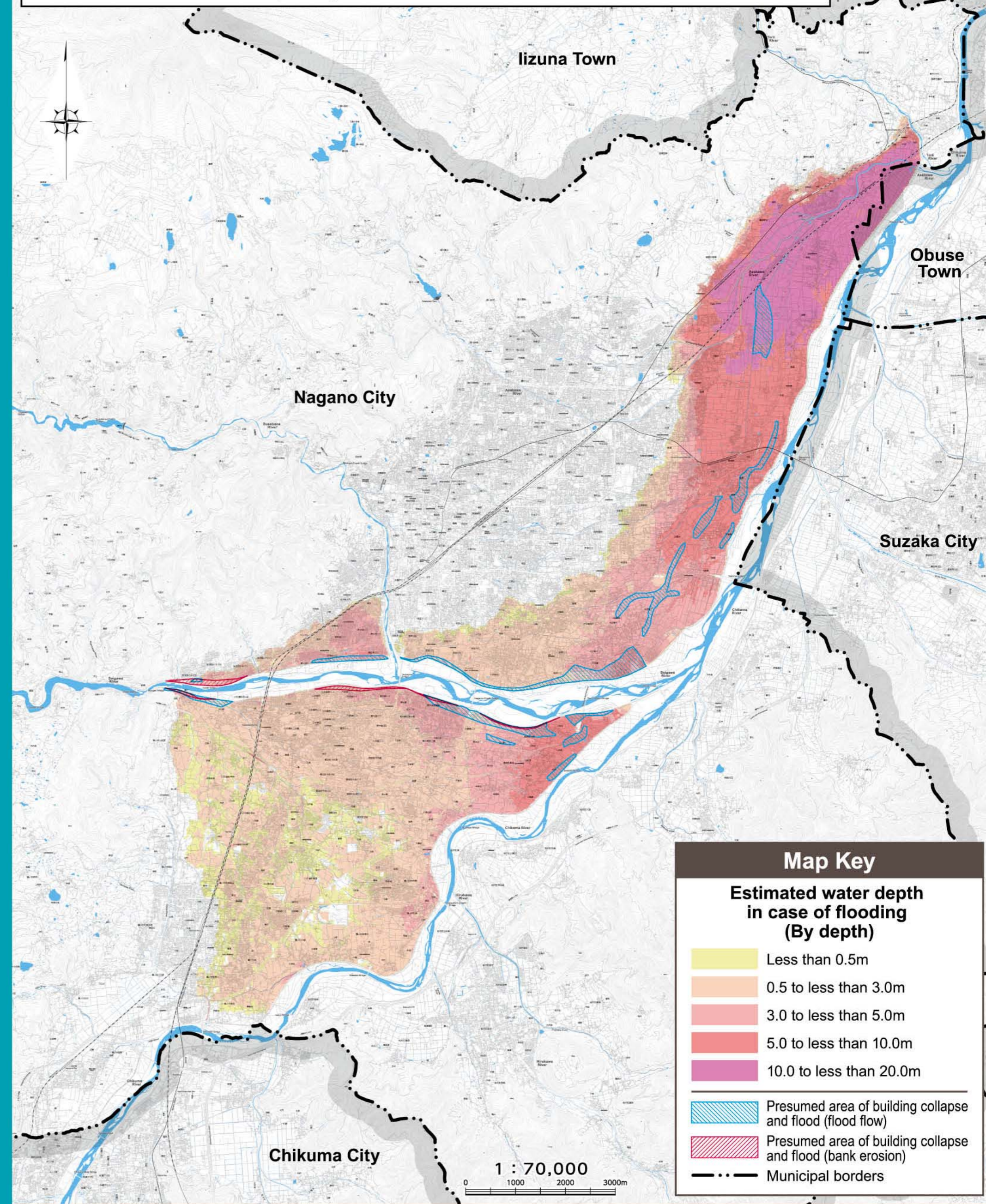
### Shinano River System Chikuma River Map of Estimated Flood Extents (Estimated maximum rainfall)

Rainfall assumed: Total rainfall of 396mm for two consecutive days in the Chikuma River basin  
Map created by: Chikuma River Office, Hokuriku Regional Development Bureau, Ministry of Land, Infrastructure, Transport and Tourism



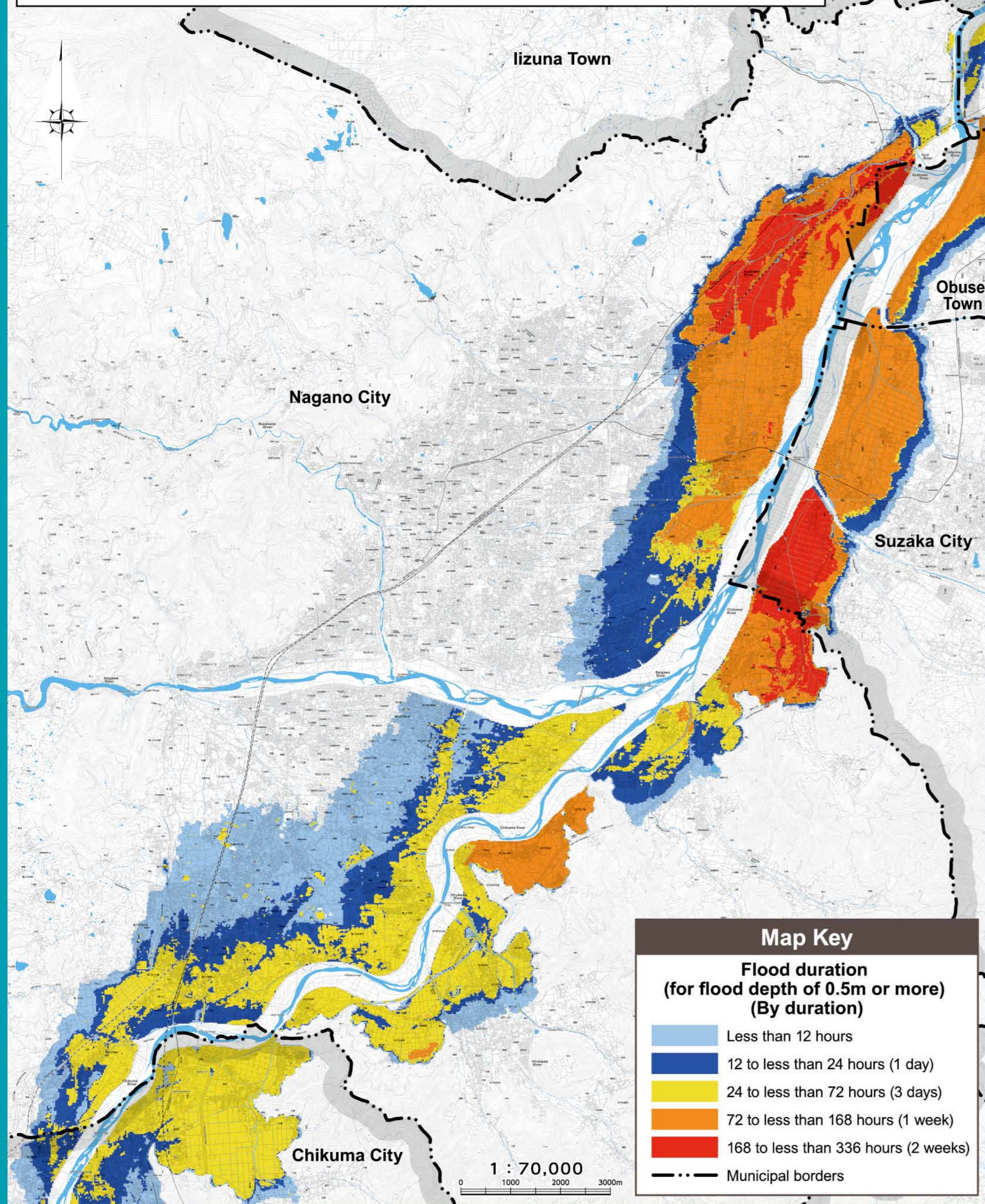
### Shinano River System Saigawa River Map of Estimated Flood Extents (Estimated maximum rainfall)

Rainfall assumed: Total rainfall of 396mm for two consecutive days in the Saigawa River basin  
Map created by: Chikuma River Office, Hokuriku Regional Development Bureau, Ministry of Land, Infrastructure, Transport and Tourism



### Shinano River System Chikuma River Map of Estimated Flood Extents / Flood Duration (Estimated maximum rainfall)

Rainfall assumed: Total rainfall of 396mm for two consecutive days in the Chikuma River basin  
Map created by: Chikuma River Office, Hokuriku Regional Development Bureau, Ministry of Land, Infrastructure, Transport and Tourism



### Shinano River System Saigawa River Map of Estimated Flood Extents / Flood Duration (Estimated maximum rainfall)

Rainfall assumed: Total rainfall of 396mm for two consecutive days in the Saigawa River basin  
Map created by: Chikuma River Office, Hokuriku Regional Development Bureau, Ministry of Land, Infrastructure, Transport and Tourism

