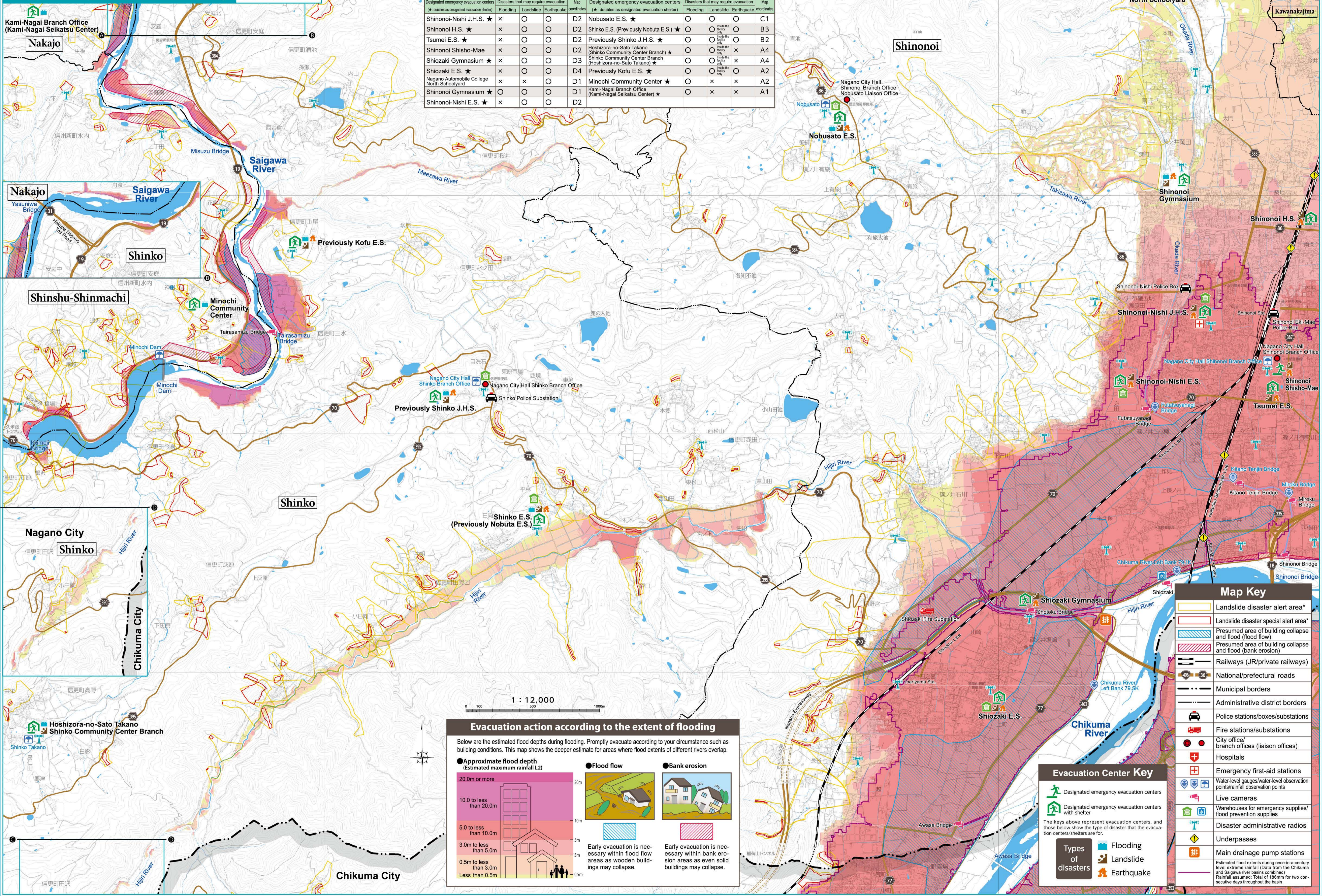


Nagano City Flood Hazard Map

Shinko/West of Shinonoi

List of Evacuation Centers									
Designated emergency evacuation centers (*: doubles as designated evacuation shelter)	Disasters that may require evacuation			Map coordinates	Designated emergency evacuation centers (*: doubles as designated evacuation shelter)	Disasters that may require evacuation			Map coordinates
	Flooding	Landslide	Earthquake			Flooding	Landslide	Earthquake	
Shinonoi-Nishi J.H.S. ★	x	○	○	D2	Nobusato E.S. ★	○	○	○	C1
Shinonoi H.S. ★	x	○	○	D2	Shinko E.S. (Previously Nobuta E.S.) ★	○	○	○	B3
Tsumei E.S. ★	x	○	○	D2	Previously Shinko J.H.S. ★	○	○	○	B2
Shinonoi Shisho-Mae	x	○	○	D2	Hoshizora-no-Sato Takano (Shinko Community Center Branch) ★	○	○	x	A4
Shiozaki Gymnasium ★	x	○	○	D3	Shinko Community Center Branch (Hoshizora-no-Sato Takano) ★	○	○	x	A4
Shiozaki E.S. ★	x	○	○	D4	Previously Kofu E.S. ★	○	○	○	A2
Nagano Automobile College North Schoolyard	x	x	○	D1	Minochi Community Center ★	○	x	x	A2
Shinonoi Gymnasium ★	○	○	○	D1	Kami-Nagai Branch Office (Kami-Nagai Seikatsu Center) ★	○	x	x	A1
Shinonoi-Nishi E.S. ★	x	○	○	D2					



Evacuation action according to the extent of flooding

Below are the estimated flood depths during flooding. Promptly evacuate according to your circumstance such as building conditions. This map shows the deeper estimate for areas where flood extents of different rivers overlap.

Approximate flood depth (Estimated maximum rainfall L2)	Flood flow	Bank erosion
20.0m or more		
10.0 to less than 20.0m		
5.0 to less than 10.0m		
3.0m to less than 5.0m		
0.5m to less than 3.0m		
Less than 0.5m		

Early evacuation is necessary within flood flow areas as wooden buildings may collapse.

Early evacuation is necessary within bank erosion areas as even solid buildings may collapse.

Map Key

- Landslide disaster alert area*
- Landslide disaster special alert area*
- Presumed area of building collapse and flood (flood flow)
- Presumed area of building collapse and flood (bank erosion)
- Railways (JR/private railways)
- National/prefectural roads
- Municipal borders
- Administrative district borders
- Police stations/boxes/substations
- Fire stations/substations
- City office/branch offices (liaison offices)
- Hospitals
- Emergency first-aid stations
- Water-level gauges/water-level observation points/rainfall observation points
- Live cameras
- Warehouses for emergency supplies/food prevention supplies
- Disaster administrative radios
- Underpasses
- Main drainage pump stations

Evacuation Center Key

- Designated emergency evacuation centers
- Designated emergency evacuation centers with shelter

The keys above represent evacuation centers, and those below show the type of disaster that the evacuation centers/shelters are for.

Types of disasters

- Flooding
- Landslide
- Earthquake