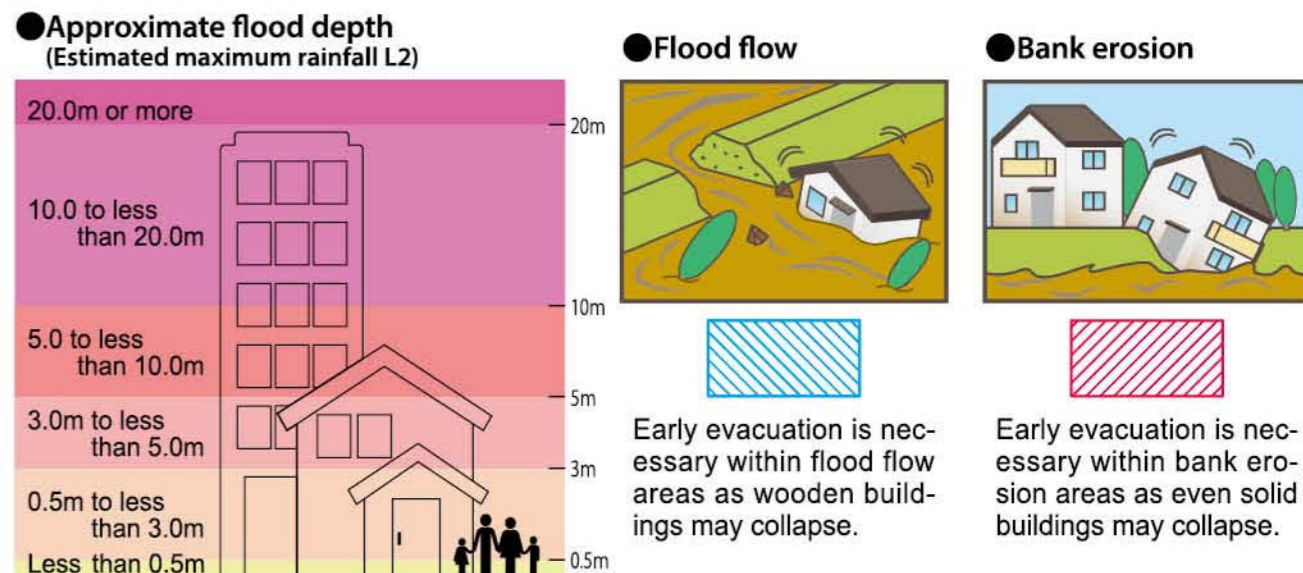


Nagano City Flood Hazard Map Wakaho

Evacuation action according to the extent of flooding

Below are the estimated flood depths during flooding. Promptly evacuate according to your circumstance such as building conditions. This map shows the deeper estimate for areas where flood extents of different rivers overlap.



Map Key

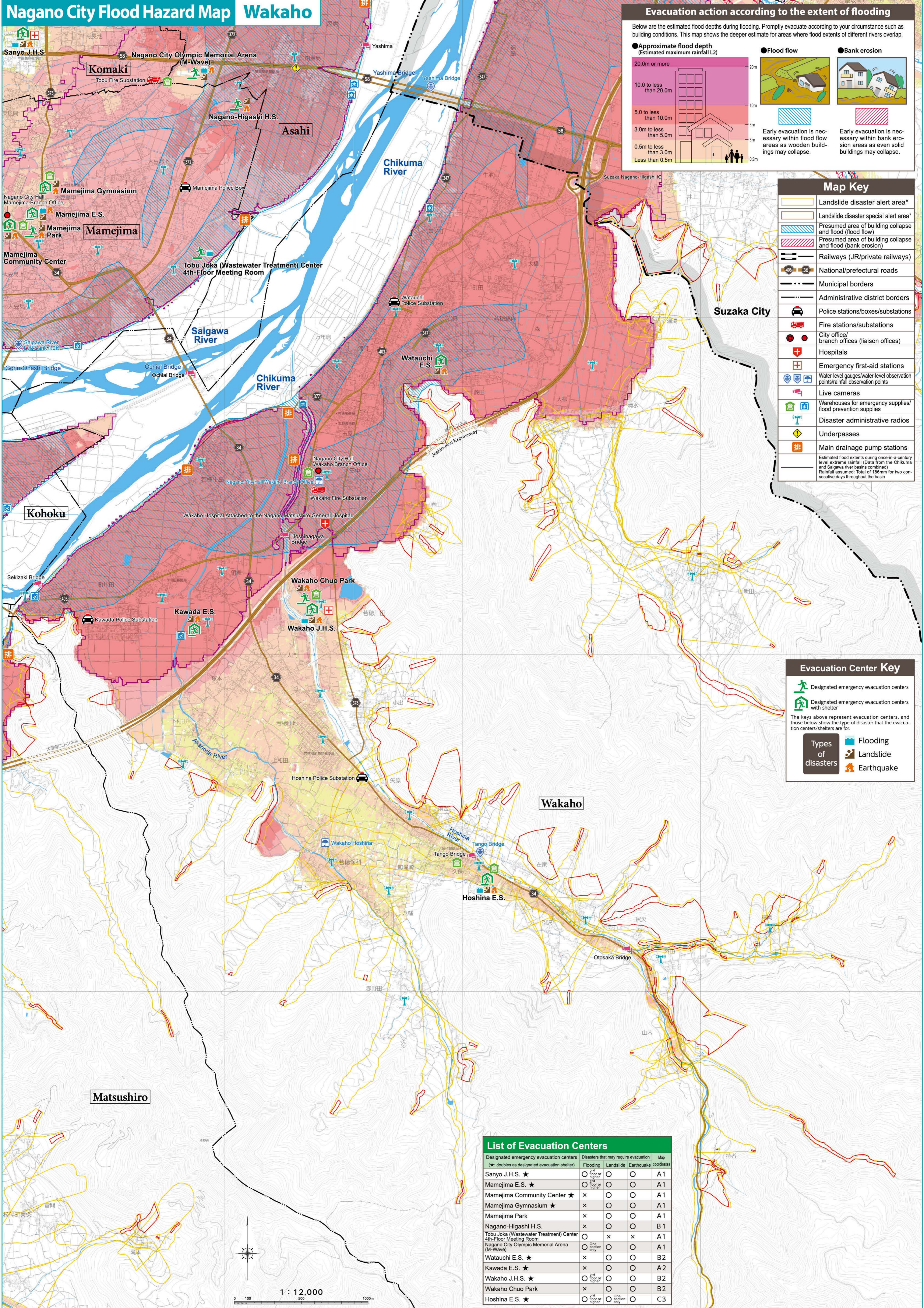
- Landslide disaster alert area*
- Landslide disaster special alert area*
- Presumed area of building collapse and flood (flood flow)
- Presumed area of building collapse and flood (bank erosion)
- Railways (JR/private railways)
- National/prefectural roads
- Municipal borders
- Administrative district borders
- Police stations/boxes/substations
- Fire stations/substations
- City office/branch offices (liaison offices)
- Hospitals
- Emergency first-aid stations
- Water-level gauges/water-level observation points/rainfall observation points
- Live cameras
- Warehouses for emergency supplies/food prevention supplies
- Disaster administrative radios
- Underpasses
- Main drainage pump stations

Evacuation Center Key

- Designated emergency evacuation centers
 - Designated emergency evacuation centers with shelter
- The keys above represent evacuation centers, and those below show the type of disaster that the evacuation centers/shelters are for.
- Types of disasters: Flooding, Landslide, Earthquake

List of Evacuation Centers

Designated emergency evacuation centers (*: doubles as designated evacuation shelter)	Disasters that may require evacuation			Map coordinates
	Flooding	Landslide	Earthquake	
Sanyo J.H.S. ★	○ (low or higher)	○	○	A1
Mamejima E.S. ★	○ (low or higher)	○	○	A1
Mamejima Community Center ★	x	○	○	A1
Mamejima Gymnasium ★	x	○	○	A1
Mamejima Park	x	○	○	A1
Nagano-Higashi H.S.	x	○	○	B1
Tobu Joka (Wastewater Treatment) Center 4th-Floor Meeting Room	○	x	x	A1
Nagano City Olympic Memorial Arena (M-Wave)	○ (one direction only)	○	○	A1
Watauchi E.S. ★	x	○	○	B2
Kawada E.S. ★	x	○	○	A2
Wakaho J.H.S. ★	○ (low or higher)	○	○	B2
Wakaho Chuo Park	x	○	○	B2
Hoshina E.S. ★	○ (low or higher)	○ (one direction only)	○	C3



Scale: 1 : 12,000